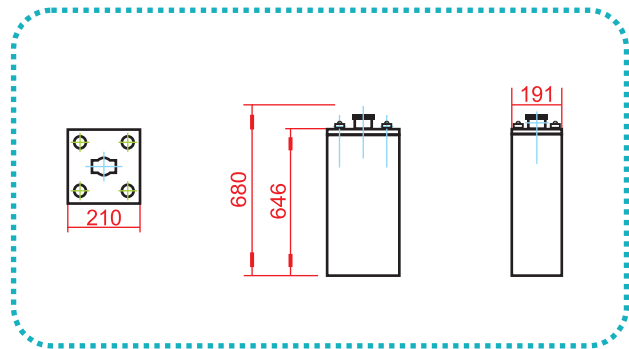


# 8 OPzS 800 ( 2 V 800Ah )



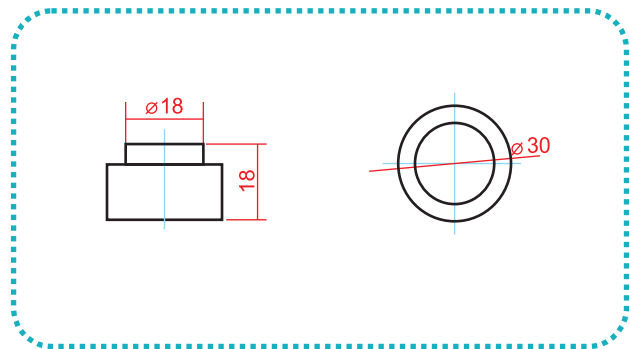
## Outer Dimensions (mm)



## Specifications

Nominal Voltage		2 V
Rated Capacity ( 10 Hour Rate )		800 Ah
Dimensions	Total Height	680 mm
	Height	646 mm
	Length	210 mm
	Width	191 mm
Weight of Dry Battery ( $\pm 2.5\%$ )		47.6 Kg
Weight of Electrolyte		19.6 Kg

## Terminal Type (mm)



## SINGLE CELL BATTERIES

TYPE ACCORDING TO DIN 40736	Capacity		Discharge		Charging			Size of Plates in Ah at 10 hours rate of discharge OPzS
	in Ah	rate of discharge (hours)	(A)	until final voltage V/cell	to 2.4 V/cell (A)	over 2.4V/cell		
						falling by (A)	falling to (A)	
8 OPzS 800	800 690 600	10 5 3	80 138 200	1.80 1.77 1.75	120	54	27	100

## Constant Current (A) Discharge Table at 25°C (77°F)

Final Voltage	DISCHARGE TIME								
	30 min	1 h	2 h	3 h	4 h	5 h	6 h	8 h	10 h
1.90 V	256	217	162	132	116	100	88	71.2	57.6
1.87 V	316	258	189	153	131	112	98.4	80	65.6
1.83 V	390	304	216	173	145	125	109	88.8	76
1.80 V	440	336	235	185	154	132	116	93.6	78.4
1.75 V	514	380	256	199	162	140	122	99.2	—
1.70 V	569	412	279	208	169	146	127	—	—