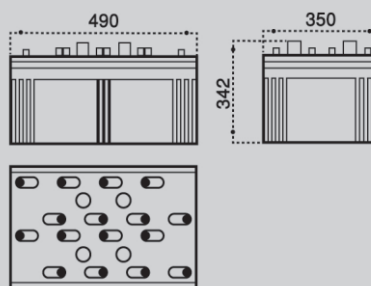


# 2 SB 2000 (2V 2000Ah)



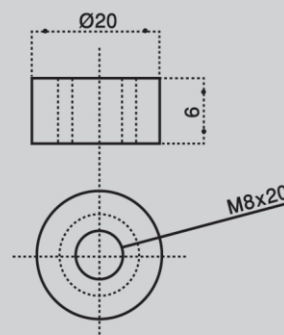
## Outer Dimensions (mm)



## Specifications

Nominal Voltage		2 V
Rated Capacity ( 10 Hour Rate )		2000 Ah
Dimensions	Total Height	382 mm
	Height	342 mm
	Length	490 mm
	Width	350 mm
Weight Approx (±2.5%)		135 Kg

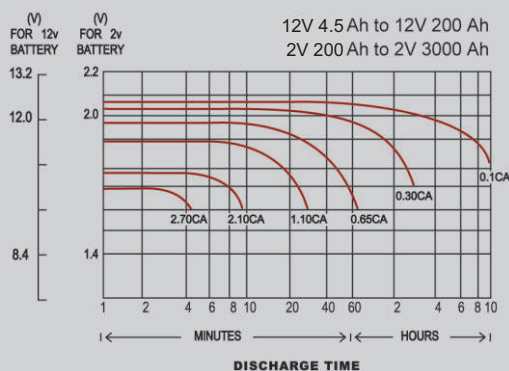
## Terminal Type (mm)



## Characteristics

Capacity 25°C (77°F)	10 hour-rate 3 hour-rate 1 hour-rate	2000 Ah 1533 Ah 1100 Ah
Internal Resistance	Full Charge Battery at 25°C (77°F)	0.15 mΩ
Capacity Affected by Temperature (10 Hour Rate)	35°C 25°C 0°C -10°C	2120 Ah 2000 Ah 1700 Ah 1500 Ah
Self-Discharge at 25°C (77°F)	Capacity After The 3 Month of Storage Capacity After The 6 Month of Storage Capacity After The 12 Month of Storage	91 % 82 % 64 %
Charge Constant Voltage	Cycle	Voltage 2.40-2.45 / Cell
	Float	Voltage 2.23-2.25 / Cell

## Discharge Curves 25°C (77°F)



## Discharge and Final Voltage Table According to IEC60896-21 Standard

Discharge time	0.25 h	1 h	3 h	5 h	8 h	10 h
Final voltage	1.60 VPC	1.60 VPC	1.70 VPC	1.73 VPC	1.75 VPC	1.80 VPC

## Constant Current Discharge Table at 25°C (77°F) Based on IEC60896-21 Standard

Amount of Current (A)	Discharge Time							
	30 m	1 h	2 h	3 h	5 h	8 h	10 h	20 h
	1839	1186	734	532	361	249	200	105

## Constant Current Discharge Table at 25°C (77°F) Based on Final Voltage 1.80 V/Cell

Amount of Current (A)	Discharge Time							
	30 m	1 h	2 h	3 h	5 h	8 h	10 h	20 h
	1700	1100	680	511	350	240	200	109