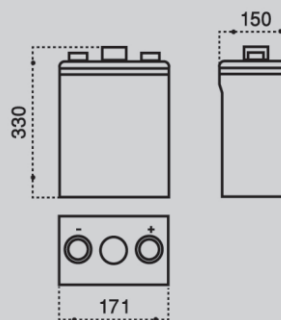


2 SB 300 (2V 300Ah)



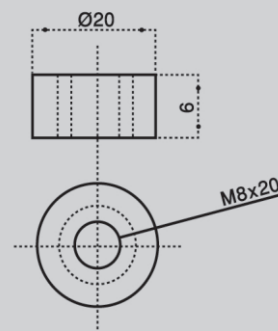
Outer Dimensions (mm)



Specifications

| | | |
|---------------------------------|--------------|--------|
| Nominal Voltage | | 2 V |
| Rated Capacity (10 Hour Rate) | | 300 Ah |
| Dimensions | Total Height | 365 mm |
| | Height | 330 mm |
| | Length | 171 mm |
| | Width | 150 mm |
| Weight Approx (±2.5%) | | 20 Kg |

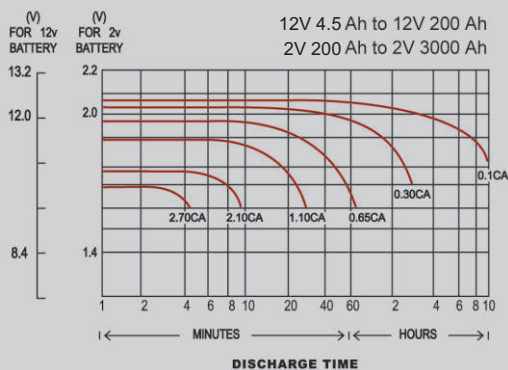
Terminal Type (mm)



Characteristics

| | | |
|---|--|--------------------------------------|
| Capacity 25°C (77°F) | 10 hour-rate 3 hour-rate 1 hour-rate | 300 Ah 225 Ah 165 Ah |
| Internal Resistance | Full Charge Battery at 25°C (77°F) | 0.7 mΩ |
| Capacity Affected by Temperature (10 Hour Rate) | 35°C 25°C 0°C -10°C | 315 Ah 300 Ah 257 Ah 226 Ah |
| Self-Discharge at 25°C (77°F) | Capacity After The 3 Month of Storage Capacity After The 6 Month of Storage Capacity After The 12 Month of Storage | 91 % 82 % 64 % |
| Charge Constant Voltage | Cycle | Voltage 2.40-2.45 / Cell |
| | Float | Voltage 2.23-2.25 / Cell |

Discharge Curves 25°C (77°F)



Discharge and Final Voltage Table According to IEC60896-21 Standard

| | | | | | | |
|----------------|----------|----------|----------|----------|----------|----------|
| Discharge time | 0.25 h | 1 h | 3 h | 5 h | 8 h | 10 h |
| Final voltage | 1.60 VPC | 1.60 VPC | 1.70 VPC | 1.73 VPC | 1.75 VPC | 1.80 VPC |

Constant Current Discharge Table at 25°C (77°F) Based on IEC60896-21 Standard

| | | | | | | | | |
|--------------------------|----------------|-----|-----|-----|-----|-----|------|------|
| Amount of Current (A) | Discharge Time | | | | | | | |
| | 30 m | 1 h | 2 h | 3 h | 5 h | 8 h | 10 h | 20 h |
| | 276 | 177 | 109 | 80 | 51 | 37 | 30 | 15 |

Constant Current Discharge Table at 25°C (77°F) Based on Final Voltage 1.80 V/Cell

| | | | | | | | | |
|--------------------------|----------------|-----|-----|-----|-----|-----|------|------|
| Amount of Current (A) | Discharge Time | | | | | | | |
| | 30 m | 1 h | 2 h | 3 h | 5 h | 8 h | 10 h | 20 h |
| | 255 | 165 | 102 | 75 | 50 | 36 | 30 | 15.5 |