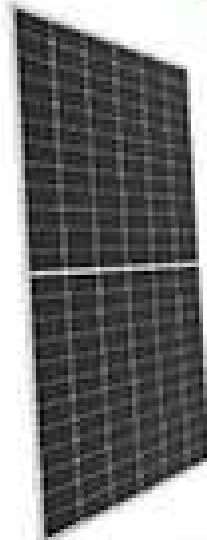




PAKATIEH

550 Watt MONOCRYSTALLINE HALF CELL MODULE



Features



High module conversion efficiency
Module efficiency up to 21.5% achieved through advanced cell technology and manufacturing excellence



Excellent performance under low light environment
Excellent performance under high conditions
Maximizing energy yield under most



Decreased profile thickness
Profile thickness of up to 17" offers higher system stability



World quality control meeting the highest international standards



Excellent wind and snow load tests
Module certified to withstand extreme wind (class 3) and snow (class 4) loads



3 years product warranty, 10 years linear performance warranty

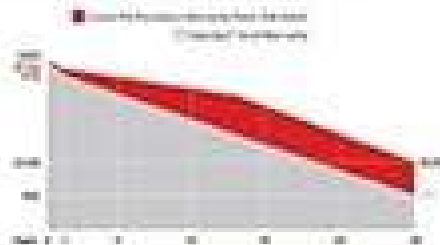
© 2019 PAKATIEH Energy Production Industry



PAKATIEH Energy Production Industry

We are one of the biggest manufacturer of crystalline silicon modules in the region. Our products range cover all periods from residential to utility-scale projects. PAKATIEH is committed to supply the best quality products & technology to its customers. The company implemented strictly ISO9001 quality management system. Our solar products can meet the IEC61215 and IEC61730 standards.

Industry-leading Warranty based on nominal power

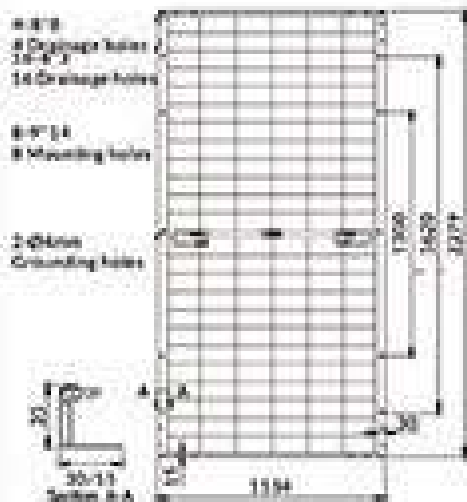


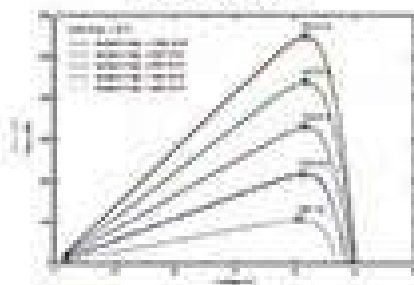
IP68

PAKATIEH modules are designed to withstand high temperature, high humidity, salt corrosion, and mechanical stress. Maximum output for the highest energy production.

Factory: No.7, 8th Taleh, Farman Industrial Estate, 45th Km Mashhad-Farman Rd, Mashhad, Iran.

© 2019 PAKATIEH Energy Production Industry. All rights reserved. PAKATIEH is a trademark.

Model: PAK- 550PM

IV Curve

PV Curve

Electrical Characteristics

DC	
Maximum Power at STC (P _{max})	550 W
Optimum Operating Voltage (V _{mp})	42.28 V
Optimum Operating Current (I _{mp})	13.01 A
Maximum Voltage (V _{oc})	50.52 V
Short Circuit Current (I _{sc})	13.95 A
Module Efficiency	21.81 %
Operating Ambient Temperature	-40°C to +85°C
Maximum System Voltage	1500V DC (IEC)
Maximum System Current	25 A
Warranty	5/10/30

*Standard test conditions: irradiance of 1000 W/m², AM1.5, 25°C
 **The 10-year warranty is based on 0.5% annual degradation rate.

AC

Maximum Power (P _{max})	422 W
Optimum Operating Voltage (V _{mp})	39.30 V
Optimum Operating Current (I _{mp})	10.73 A
Open Circuit Voltage (V _{oc})	48.55 V
Short Circuit Current (I _{sc})	11.83 A

Temperature Characteristics

Temperature Coefficient of P _{max}	-0.46%/°C
Temperature Coefficient of V _{oc}	-0.29%/°C
Temperature Coefficient of I _{sc}	+0.06%/°C

Mechanical Characteristics

No. of Cells	60 (2P/20P)
Dimensions	1134x1600x35 mm
Weight	20.7 Kg
Frame Mat	Aluminum Alloy 6063 Anodized
Front Glass	3.2mm High Translucent tempered glass
Back Sheet	High quality backsheet sheet
Connectors	MC4 (MC4 compatible)
Carrier Cable	5.6 Long (optional) 6.7mm
Connector	Optional length of cables (optional) up to 10 connector
Orientation	90° horizontal

